

877 SQUARE FEET
2 BEDROOMS, 2 BATHROOMS

Rebuild A Home You Will Love On Your Own Lot



EXPERTS  **IN YOUR HOME**
WE DO MORE THAN YOU THINK

This model is an 877 square foot home with 2 bedrooms and 2 bathrooms.

The model comes in two styles, Traditional Farmhouse and Contemporary Modern.

From there you can choose from the upgrade options that you are interested in to make this your home. Need an attached garage? Done. Prefer wood cabinets to panel cabinets? Done.

Once you choose, we will provide you with your price up front!

No surprises. No change orders. No unexpected add-ons.



Traditional Farmhouse



Contemporary Modern



FEATURES AND OPTIONS

Included in the base price are the following features:

Exterior standard features:

- Mix of plaster and cement board siding
- Black vinyl windows
- Modern fiberglass entrance door
- 30-year comp roof-black
- Concrete patio at the entrance and back slider door

Interior standard features include:

- Glue down Luxury Vinyl Plank 8mil flooring
- Nylon stain guard carpet in bedrooms
- Flat panel cabinets
- Subway tile backsplash
- Single basin stainless steel kitchen sink
- Solid surface counters
- Recessed can lighting
- Ceiling fans
- Drop-in acrylic tub/shower combos

Upgrade options for your consideration:

- Painted wood shaker cabinets
- Floating Luxury Vinyl Plank flooring
- Tile in bathrooms
- Standing seam metal roofing
- Attached garage

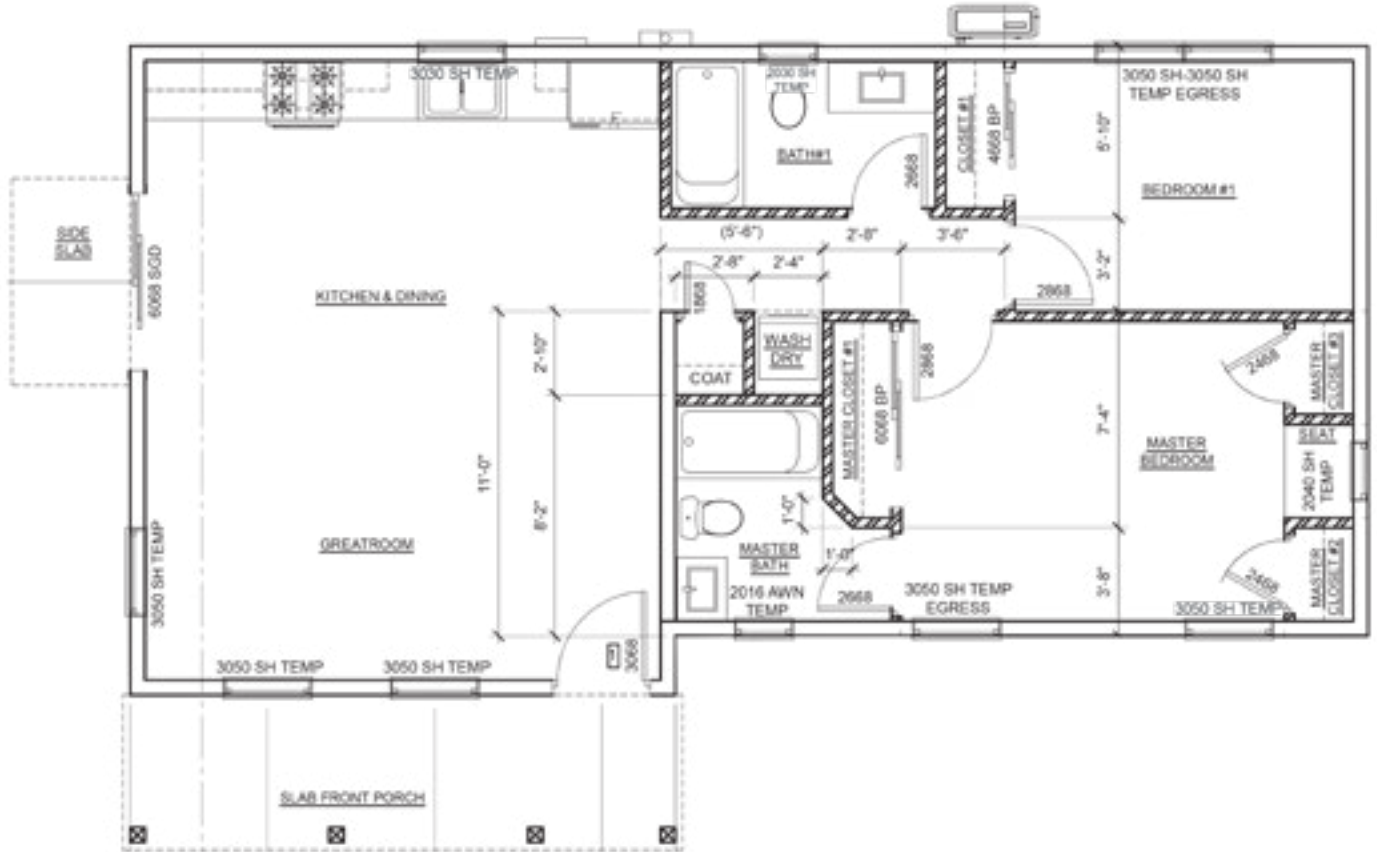
Standard pricing reflects the following assumptions:

- Price includes all design and permit fees
- Assumes the lot is flat and backfill of soil is not needed. Lot is considered "buildable" with minimal site work
- Foundation will be a concrete slab on grade. Raised foundation is available for an additional fee
- Septic is in good condition and can be connected to. Excludes any septic inspections and repairs
- Assumes utilities are to the site and ready to be connected to- water, gas and electricity. Excludes all fees to utility companies
- Standard driveway, walkway and patios are included
- Landscaping is excluded, site will be fine graded and ready for landscaping
- Appliances are not included

To get a sense of the space, here are some renderings of the rooms in this contemporary modern home.







WHY WORK WITH EXPERTS IN YOUR HOME

- We have been building homes in Butte County since 1948
- We have the oldest active general contractors license in Butte County
- We take care of all steps in the process. Design, permit and build
- We will provide you with an up front price with no surprises
- We provide an assigned project manager that will keep you informed throughout the entire project and make sure the building process is smooth
- We will provide you with access to an in-house interior designer to help you make all of your final selections



EXPERTS IN YOUR
HOME

WE DO MORE THAN YOU THINK

1756 Humboldt Road
Chico, CA 95928
(530) 924-5564

Cont. Lic. #143778

www.ExpertsInYourHome.com